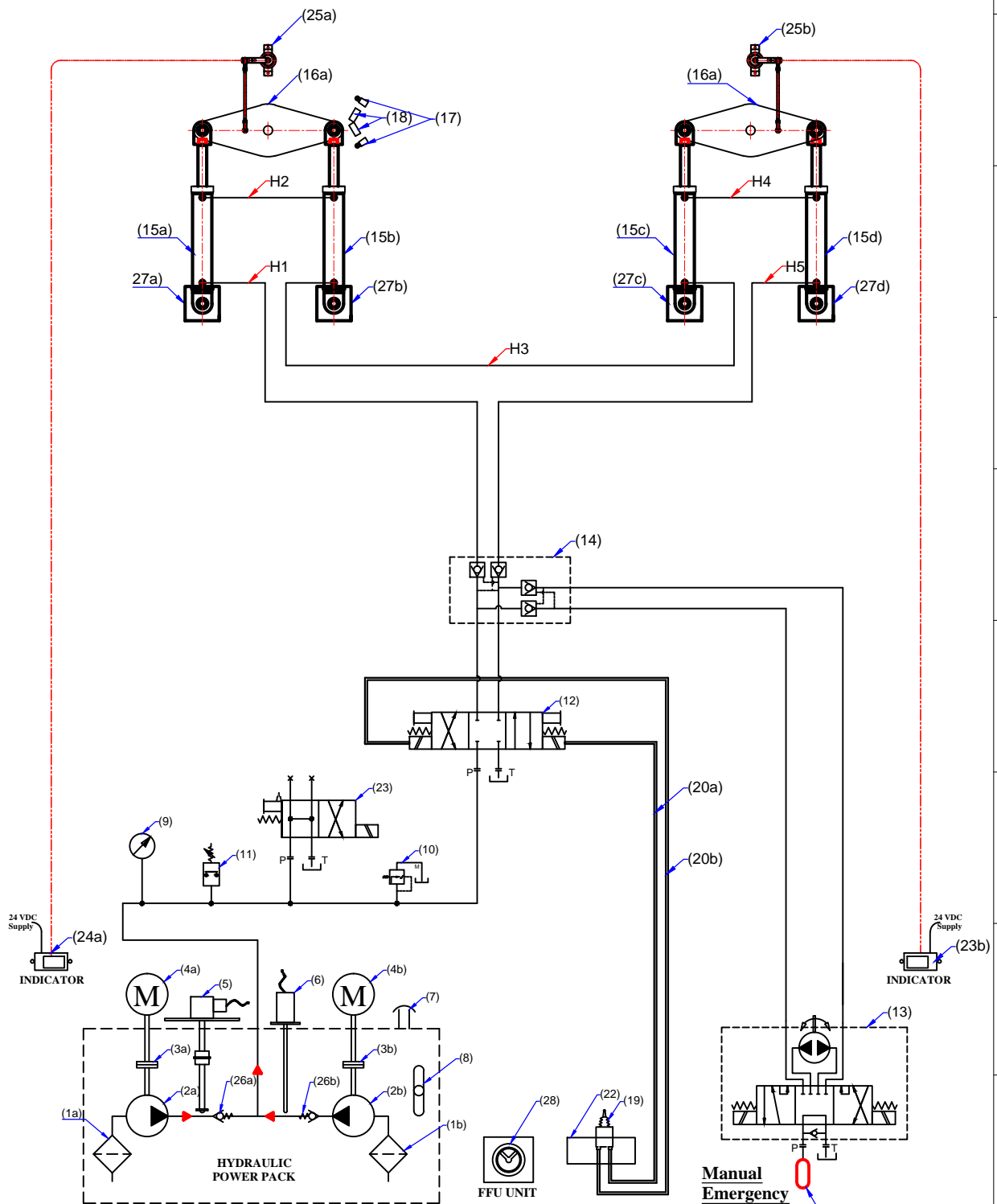


Electro-Hyd. - JumboZ - 2800 - 2x 2



**MAC ♦ N ♦ HOM SYSTEMS
KOCHI - 20**

DESIGNATION

DWG. No.

DATE

HYDRAULIC
SYNCHRONISATION

MHS-4124 1of 2

21.05.2024

A

B

C

D

E

F

G

H

ELECTRO - HYDRAULIC CIRCUIT SYSTEM PARAMETERS

1. PUMP CAPACITY

**Discharge : 9Lpm.
Max. Pressure : 200kg/cm²**

2. HYDRAULIC CYLINDER

**Model : JumboZ -2800
Stroke : 440mm.
Ram : 50mm.
Operating Pressure : 70kg./cm²**

3. Helm Steering Wheel

Diameter : 686mm. (27")

4. HYDRAULIC HOSE

**Grade : R1
I D : 1/2"**

5. ELECTRIC MOTOR

5HP, 1440RPM, 50Hz.3Phase.

LEGENDS:

Sl No.	Description
1a,1b.	Suction Strainer
2a,2b.	Hydraulic pump
3a,3b.	Flexible Coupling
4a,4b.	Electric Motor
5	Oil Level Sensor
6	Oil Temp. Sensor
7	Filler Breather
8	Dip Stick
9	Pressure Gauge
10	Pr.Relief Valve
11	Pre.Switch.Low Pre.Alam
12	Sol.Ope.Direction Valve
13	Emergency Manual Pump
14	Pilot Operated Check Valve
15a,15b, 15c,15d	Hyd. Actuator
16a,16b	Tiller Arm
17	Limit Switch
18	Mechanical Stopper (Yard Supply)
19	Joy Stick
20a,20b	Ele.Line to Sol.Ope.Valve
21	Reservoir
22	Steering Gear Control Panel
23	Unloading Valve
24a,24b	Rudder Angle Indicator
25a,25b	Rudder Angle Sensor
26a,26b	Non-return Valve
27a,27b	Rear end bkt.
28	FFU Unit

HOSES

1	H1
2	H2
3	H3
4	H4
5	H5



**MAC ♦ N ♦ HOM SYSTEMS
KOCHI - 20**

DESIGNATION

DWG. No.

DATE

**HYDRAULIC
SYNCHRONISATION**

MHS-4124 - 2 of 2

21.05.2024

A

B

C

D

E

F

G

H